

EESRB

Energy & Environmental Science Research Building



Discussion Agenda

EESRB Design Recap

1. Brief History of the Programming and Design Process
2. Current Floor Plans
3. Design Renderings
4. Construction Photos
5. Upcoming User Group Tours
6. Questions and Discussion

Project Timeline

Initial Programming	May 2013
Program Update	July 2018
Request For Qualifications	August 2018
Interview	October 2018
Program Verification	December 2018
Surge Design Phases	December 2018 – June 2019
EESRB Design Phases	January 2019 – July 2020
Surge Completion	December 2020
Anticipated EESRB Completion	April 2024 Opening in Fall 2024

Space Allocation Summary Timeline

	12/05/13	07/20/18	12/21/18
1.0 Herbert College of Agriculture Classrooms, Classroom Support + Informal Learning Spaces			
1.1 Classrooms	11,123	21,325	24,025
1.2 Informal Learning & Collaboration	2,975	7,575	9,175
2.0 Offices & Dedicated Department Space			
2.1 Biosystems Engineering & Soil Sciences (BESS)	8,180	8,030	8,785
2.2 Entomology & Plant Pathology	8,763	8,523	8,915
2.3 Forestry, Wildlife & Fisheries	17,023	16,386	16,395
2.4 Plant Sciences	16,360	15,670	14,583
2.5 IACUC OHP OLAC	3,573	3,153	2,265
2.6 Smith International Center	-	1,500	1,470
2.7 Southern Research Station - Forest Inventory & Analysis	9,760	-	-
3.0 Building Support Spaces			
3.1 Building Support	4,135	5,080	5,580
3.2 Future Laboratory Space	9,450	3,780	-
Total Program NSF	91,342	91,022	91,193
Efficiency Ratio	0.58	0.58	0.58
Total Program GSF	157,486	156,934	157,474

LORD • AECK • SARGENT
ARCHITECTURE

MEETING NOTES

PROJECT NAME	PROJECT NUMBER
UTIA Energy & Environmental Science Education Research Center	10218-03
DATE OF MEETING	TIME
October 10, 2012	See Meeting Schedule
MEETING LOCATION	PURPOSE
	Program Progress Wrap-Up
PARTICIPANTS	EMAIL
Tim Fawver, UTIA	tfawver@utk.edu
Tom McKeehan, UT	tom@tennessee.edu
Steve Glafenhein, UTIA	sglafenh@utk.edu
Bill Pace, UTK	wpacel@utk.edu
Joe Cagle, UTIA	jcagle@utk.edu
Barry Abrams, LAS	barabrams@lasarchitect.com
Becky McDuffie, LAS	Bmcduffie@lasarchitect.com
Doug McCarty, MHM	dmcarty@mhmine.com
DISTRIBUTION	VIA
PARTICIPANTS	
Dr. Larry Arrington, UTIA	larrington@tennessee.edu
John Starr, LAS	lstarr@lasarchitect.com
Brian Karlowicz, LAS	bkarlowicz@lasarchitect.com
Scott Webb, MHM	swebb@mhmine.com
Jeff Linde, N&B	jlinde@newcomb-boyd.com
FILE : k:\projects\10218-03\prj\cor\mna\meeting notes - 121009&10\ba121010_wrap-up.docx	

ITEMS BELOW THAT ARE NEW OR UPDATED ARE IDENTIFIED WITH AN UNSHADED BAR IN THE LEFT HAND MARGINS. ITEMS BELOW THAT HAVE APPEARED ON PREVIOUS REPORTS BUT ARE NOT YET APPROVED OR CLOSED ARE IDENTIFIED WITH A SHADED BAR IN THE LEFT HAND MARGINS.

ISSUE NO.	DATE	ISSUE	ACTION BY DATE DUE STATUS
1		Reviewed Progress: • Ellington Existing Space Use • Reviewed Program of Spaces for the EESERC	
2		General Classrooms: • Current funding source is by UTIA, no funding by UTK. • Based on current funding, the Program should be based on matching Ellington vs. increasing.	
3		Renovations in the next 10 years are planned for: • Morgan Hall	

LORD • AECK & SARGENT , INC.
1201 Peachtree Street, NE, Suite 300 | Atlanta, Georgia 30361-3500, USA
TollFree 1-877-929-1400 | Fax 1-877-929-1401
404-253-1400 | Fax 404-253-1401
www.LordAeckSargent.com

UTIA Energy & Environmental Science Education Research Center
Program Progress – Wrap-Up Meeting
October 29, 2012
Page 2

	• McCord	
4	PBB is a recently constructed building, the priority is to keep current spaces functions in PBB rather than move them to the EESERC. The priority is to relocate existing functions in Ellington in the new EESERC.	
5	Multi-Use Large Meeting Space (Hollingsworth replacement): • May get additional funding/donations for this space, Board of Trustees meet in this space. • The space should accommodate 500 occupants in a banquet style. The current Program accommodates 500 in lecture seating, but not in banquet style – this will add square footage.	
6	Potential lease costs from FIA and NRC to be factored in the budget.	Steve
7	If the budget is increased, it'll take additional time, approximately one year, to get approved.	
8	Food Service: Currently including an area for a coffee shop – not required to use ARA Mark on the AG Campus.	
9	Shell Space Option: • As an option to keep initial cost down while planning for future needs, look at shelling out space to fit-out in the future.	Steve
10	Needs/Wants: • Review and gather from Users what is critically needed vs. wants to look at the minimum program.	Barry/Steve
11	Next Steps: • Update Space List and Space Diagrams (LAS) • Look at reduced Program • Program and Cost Estimate to Steve to present to Executive Committee.	Becky/Barry John/Barry/ Doug

REMARKS**ATTACHMENTS**

PREPARED BY Barry M. Abrams, AIA **DATE PREPARED** October 29, 2012
Lord, Aeck & Sargent, Inc.

THESE NOTES SUMMARIZE OUR UNDERSTANDING OF THIS MEETING. PROJECT ACTION WILL BE BASED ON THESE NOTES.
PLEASE CONTACT THE WRITER IMMEDIATELY IF YOU DO NOT CONCUR.

LORD • AECK & SARGENT , INC.
1201 Peachtree Street, NE, Suite 300 | Atlanta, Georgia 30361-3500, USA
TollFree 1-877-929-1400 | Fax 1-877-929-1401
404-253-1400 | Fax 404-253-1401
www.LordAeckSargent.com

.04 May 2018 PROGRAM REVISIONS

1. Southern Research Station | Inventory & Analysis (9,760 NSF) has been removed from the program
2. Include Smith International Center (1,500 NSF)
3. Include College of Veterinary Medicine Classrooms (6,750 NSF)
4. Reduce standard Faculty Office size from 150nsf to 120nsf
5. Reduces overall sf of remaining office space by 2,220nsf [74 offices]
6. Increase Lobby size from 800nsf to 1,600nsf
7. Add 8 Small Collaboration areas for a total of 1,200nsf [150nsf each]
8. Renamed 'Faculty-Student Commons' to 'Collaboration Areas – medium'; increase to 800nsf per room.
9. Increase size of Large Collaboration Space from 600nsf to 1,200nsf
10. Adjust Classroom net sf per person to 20sf for seminar, 25sf for classrooms, and 15sf for 500-person Conference Center

.05 December 2018 PROGRAM REVISION SUMMARY

1. Reduced standard Faculty Office size from 120nsf to 100nsf and Technical/Part-Time Offices from 100nsf to 80nsf. Reallocated nsf to provide additional meeting spaces.
2. Revised standard lab module dimension from 10'-6" to 10'-4" to better coordinate with typical brick coursing.
3. Refined amount of Research Space for each Department and removed future lab growth.
4. Made minor updates to the quantity of offices for each department based on needs.
5. Increased size of CVM classrooms to accomodate universal access (ramps).
6. Refined Program of Surge Building.

Exec Comm Meetings

1 – 11/5/2018 (attendees on right)

2 – 11/19/2018

3 – 12/17/2018

Dr. Tim Cross, Chancellor

Steve Glafenhein

Joe Cagle

Ashley Hull

Dan Smith

Thom Haeuptle

Misty Bailey

Jim Thompson

Juan Jurat-Fuentes

Karen Vail

Heather Means

Scott Schlarbaum

Jennie Swanson

Michael Essington

Jake Nelson

Annette Wszelaki

David Anderson

Melissa Hines

John Starr

Kelly Headden

Angela Berrier

UT Institute of Agriculture

UT Institute of Agriculture

UT Institute of Agriculture

UT Institute of Agriculture

UT Facilities Services

UT Facilities Planning

UT College of Veterinary Medicine

UT College of Veterinary Medicine

UT Entomology & Plant Pathology

UT Entomology & Plant Pathology

UT College of Animal Sciences

UT Forestry, Wildlife & Fish

UT Forestry, Wildlife & Fish

UT Biosystems Engineering & Soil Sciences

UT Plant Sciences

UT Plant Sciences

UT Large Animal Clinical Sciences

UT Large Animal Clinical Sciences

Lord Aeck Sargent (LAS)

BarberMcMurry Architects (BMA)

BarberMcMurry Architects (BMA)

Program Verification Meetings

- 1 – 11/14-16/2018 (attendees on right)
- 2 – 11/27-29/2018
- 3 – 12/11-12/2018

PS

Steve Glafenhein	UT Institute of Agriculture
Joe Cagle	UT Institute of Agriculture
Thom Haeuptle	UT Facilities Planning
Dan Smith	UT Facilities Services
Andy Pulte	UT Plant Sciences
Scott Senseman	UT Plant Sciences
David Butler	UT Plant Sciences
Jake Nelson	UT Plant Sciences
Dawn Seigel	UT Plant Sciences
John Sorochan	UT Plant Sciences
John Starr	Lord Aeck Sargent (LAS)
Ben Elliott	Lord Aeck Sargent (LAS)
Kelly Headden	BarberMcMurry Architects (BMA)

Annex B

Steve Glafenhein	UT Institute of Agriculture
Joe Cagle	UT Institute of Agriculture
Thom Haeuptle	UT Facilities Planning
Dan Smith	UT Facilities Services
Scott Schlarbaum	UT Forestry Wildlife & Fish
Joe Sarten	UT Ag Research
Bobby Simpson	UT ETREC
John Starr	Lord Aeck Sargent (LAS)
Ben Elliott	Lord Aeck Sargent (LAS)
Brian Karlowicz	Lord Aeck Sargent (LAS)
Kelly Headden	BarberMcMurry Architects (BMA)

BESS

Steve Glafenhein	UT Institute of Agriculture
Joe Cagle	UT Institute of Agriculture
Thom Haeuptle	UT Facilities Planning
Dan Smith	UT Facilities Services
Michael Essington	UT Biosystems Engineering/Soil Science
Julie Carrier	UT Biosystems Engineering/Soil Science
Nour Abdoulmoumine	UT Biosystems Engineering/Soil Science
Sindhu Jagadamma	UT Biosystems Engineering/Soil Science
Andrew Sherfy	UT Biosystems Engineering/Soil Science
Jaehoon Lee	UT Biosystems Engineering/Soil Science
Philip Ye	UT Biosystems Engineering/Soil Science
John Starr	Lord Aeck Sargent (LAS)
Ben Elliott	Lord Aeck Sargent (LAS)
Kelly Headden	BarberMcMurry Architects (BMA)

OLAC/IACUC/OHP

Steve Glafenhein	UT Institute of Agriculture
Joe Cagle	UT Institute of Agriculture
Thom Haeuptle	UT Facilities Planning
Dan Smith	UT Facilities Services
Brian Ranger	UT Biosafety
Ben Edenfield	UT CVM
Michael McEntee	UT CVM
Elizabeth Bailey	UT IACUC
Frankie McGinnis	UT IACUC
Jerri O'Rourke	UT IACUC
Bryce Burton	UT OLAC
Amy Knowles	UT OHP
Steve Crouch	UT Safety Office
John Starr	Lord Aeck Sargent (LAS)
Ben Elliott	Lord Aeck Sargent (LAS)
Brian Karlowicz	Lord Aeck Sargent (LAS)
Kelly Headden	BarberMcMurry Architects (BMA)

EPP

Steve Glafenhein	UT Institute of Agriculture
Joe Cagle	UT Institute of Agriculture
Thom Haeuptle	UT Facilities Planning
Dan Smith	UT Facilities Services
Darrell Hensley	UT Entomology and Plant Pathology
DeWayne Shoemaker	UT Entomology and Plant Pathology
Karen Vail	UT Entomology and Plant Pathology
Zach Hansen	UT Entomology and Plant Pathology
John Starr	Lord Aeck Sargent (LAS)
Ben Elliott	Lord Aeck Sargent (LAS)
Brian Karlowicz	Lord Aeck Sargent (LAS)
Kelly Headden	BarberMcMurry Architects (BMA)

FWF

Steve Glafenhein	UT Institute of Agriculture
Joe Cagle	UT Institute of Agriculture
Thom Haeuptle	UT Facilities Planning
Dan Smith	UT Facilities Services
Scott Schlarbaum	UT Forestry Wildlife & Fish
Jennie Swanson	UT Forestry Wildlife & Fish
Lisa Muller	UT Forestry Wildlife & Fish
John Starr	Lord Aeck Sargent (LAS)
Ben Elliott	Lord Aeck Sargent (LAS)
Kelly Headden	BarberMcMurry Architects (BMA)

HCA/CVM

Steve Glafenhein	UT Institute of Agriculture
Joe Cagle	UT Institute of Agriculture
Thom Haeuptle	UT Facilities Planning
Dan Smith	UT Facilities Services
Shelly Olin	UT CVM
Ricardo Videla	UT CVM
John Schafer	UT CVM
John Stier	UT Ag Science & Natural Resources
Claudia Kirk	UT CVM
Bob DeNovo	UT CVM
John Starr	Lord Aeck Sargent (LAS)
Ben Elliott	Lord Aeck Sargent (LAS)
Brian Karlowicz	Lord Aeck Sargent (LAS)
Kelly Headden	BarberMcMurry Architects (BMA)

+ ITS, MEP, SIC, Surge, Task Force

Project Summary

1 PROJECT – 2 BUILDINGS

\$77.77M – Total Construction Budget

EESRB

- 5 Story - 157,500 gsf building
 - Research Labs + Lab Support
 - Teaching Labs + Prep Support
 - Department Suites
 - Faculty Offices
 - Graduate Assistant Write-Up Areas
 - 500 Person Auditorium
 - Tiered Lecture Halls (130 Person)
 - Classrooms (30 – 100 Person)
- Replaces an Existing Research Building
- Anticipated Completion – March 2024

Surge Building

- 2 Story - 20,000 gsf building
 - Research Labs + Lab Support
 - Faculty Offices (Private + Open)
 - Graduate Assistant Write-Up Areas
- Provides Swing Space during Construction
- Completion – December 2020

EESRB Program Summary

EESRB Program

- Herbert College of Agriculture (HCA) — 500P Auditorium, Classrooms, Seminar Rooms
- 4 Departments
 - Biosystems Engineering and Soil Science
 - Plant Sciences
 - Forestry, Wildlife, and Fisheries
 - Entomology and Plant Pathology } Research Labs + Lab Support
Teaching Labs + Prep Support
Shared Equipment Areas
Department Suites + Storage Needs
Faculty Offices + GRA Write-Up Areas
- Compliance Group — Research Lab, Office Suite
- Smith International Center — Office Suite
- College of Veterinary Medicine — (2) 130 Person Tiered Lecture Halls
- Public Areas — Collaborative Areas, Living Room, Café

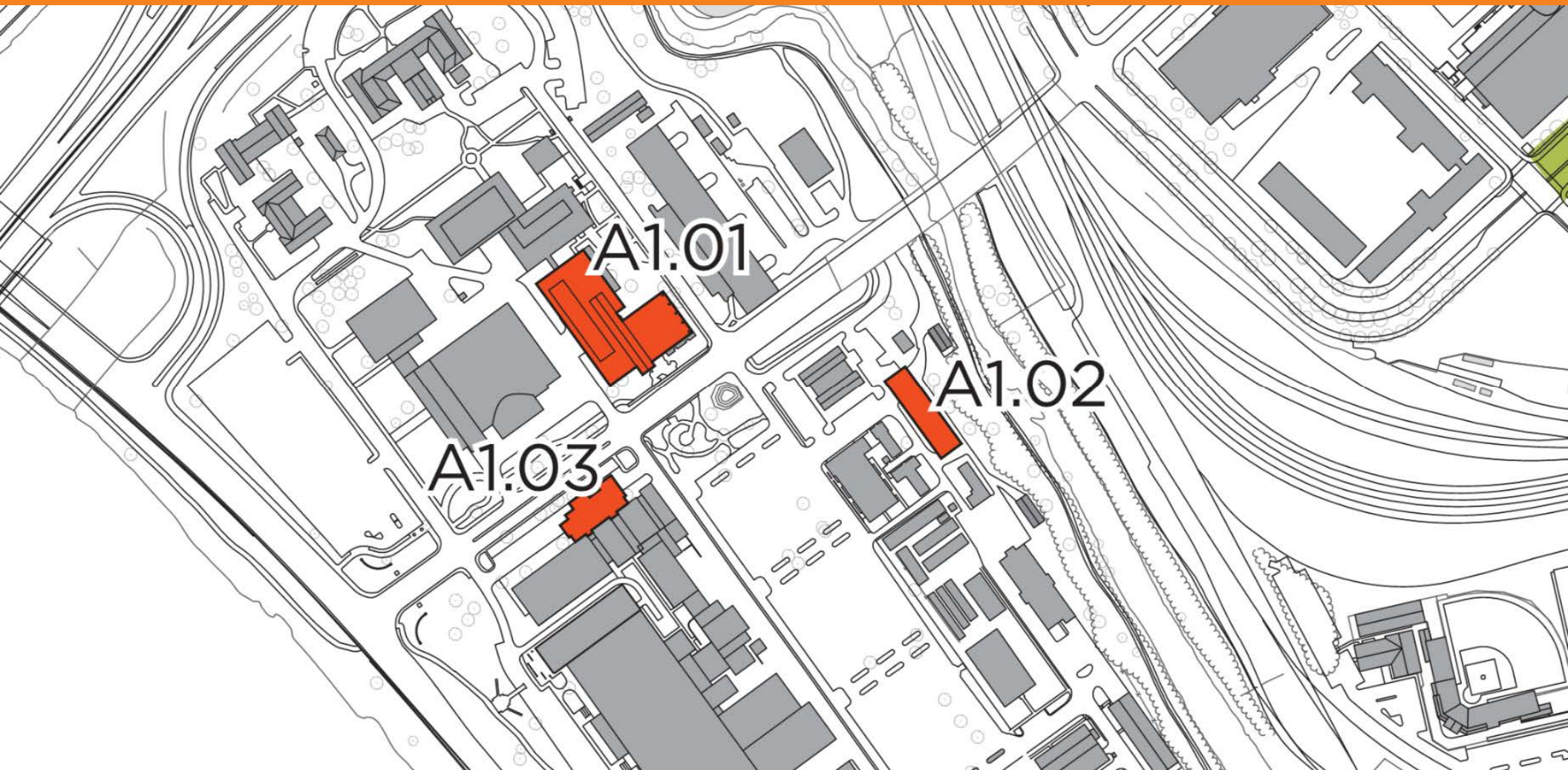
Space Comparison

	Ellington	EESRB
Private Offices	89 <i>includes GRAs</i>	116 <i>does not include GRAs</i>
Classrooms	7	15 <i>includes CVM</i>
Research Labs	32	25
Teaching Labs	3	4
Informal Learning Seats	40	325

Research Lab Space Growth

	Research Lab NSF Proposed	Existing Ellington Research Lab NSF Total	% Increase
BESS	6,200	3,726	66%
EPP	3,565	3,001	19%
FWF	5,890	2,614	125%
PS	4,650	3,506	33%
OLAC-OHP-IACUC	465	431	8%
Sub-Totals	20,770	13,278	56%
SURGE	5,400	0	-
Total	26,170	13,278	97%

Design History - UTIA Masterplan



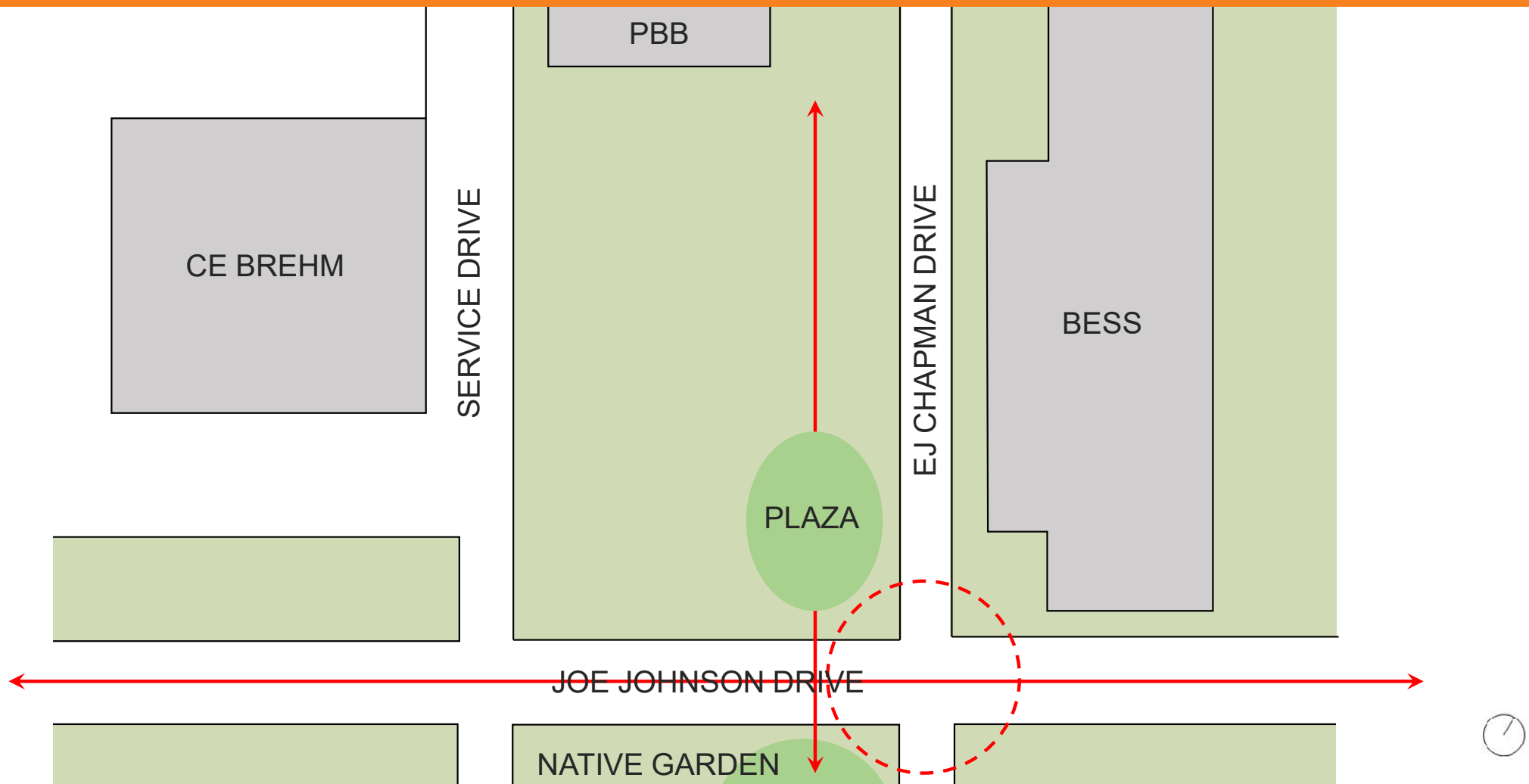
Design History - Campus Photo circa 2016



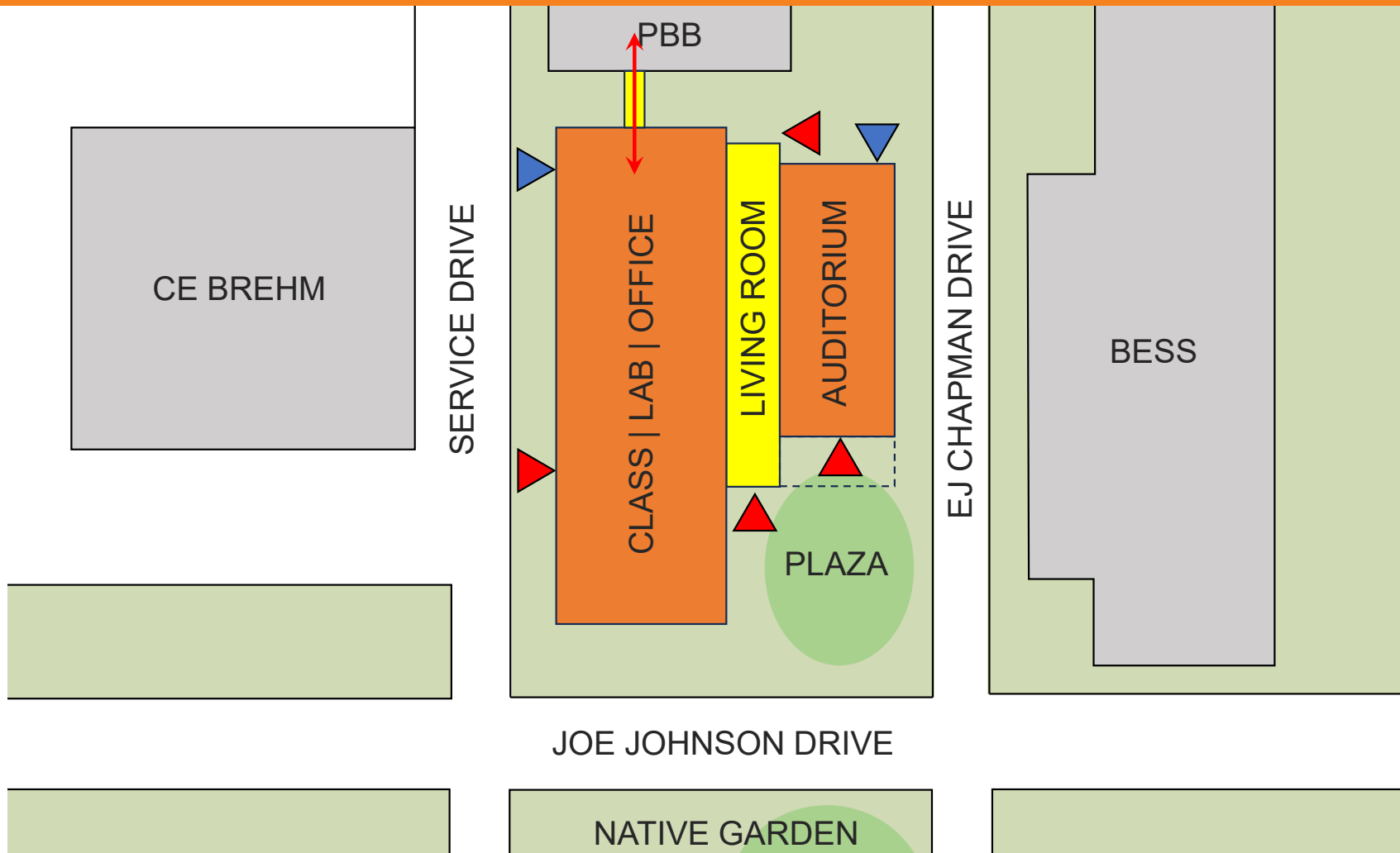




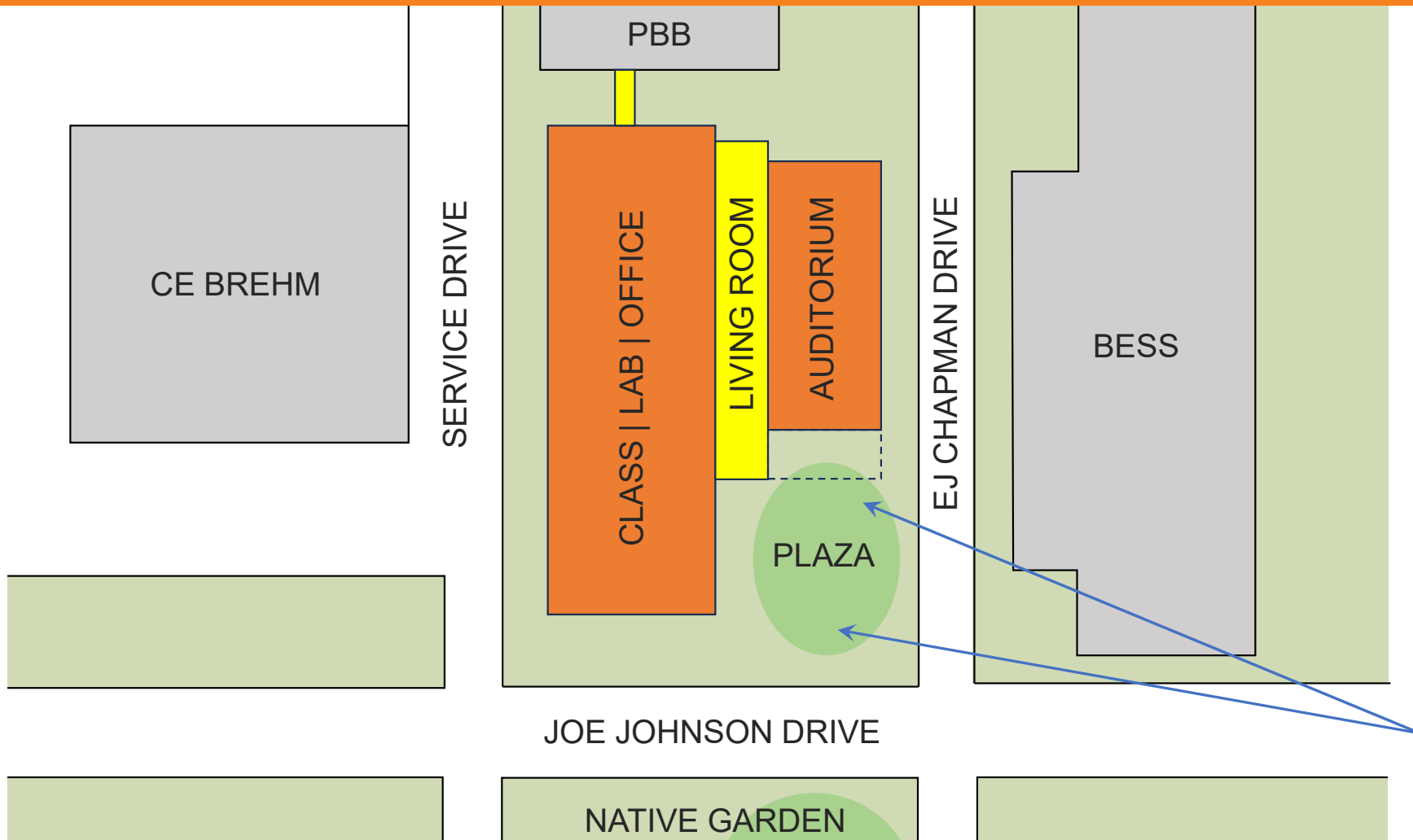
Site Diagram



Site Diagram

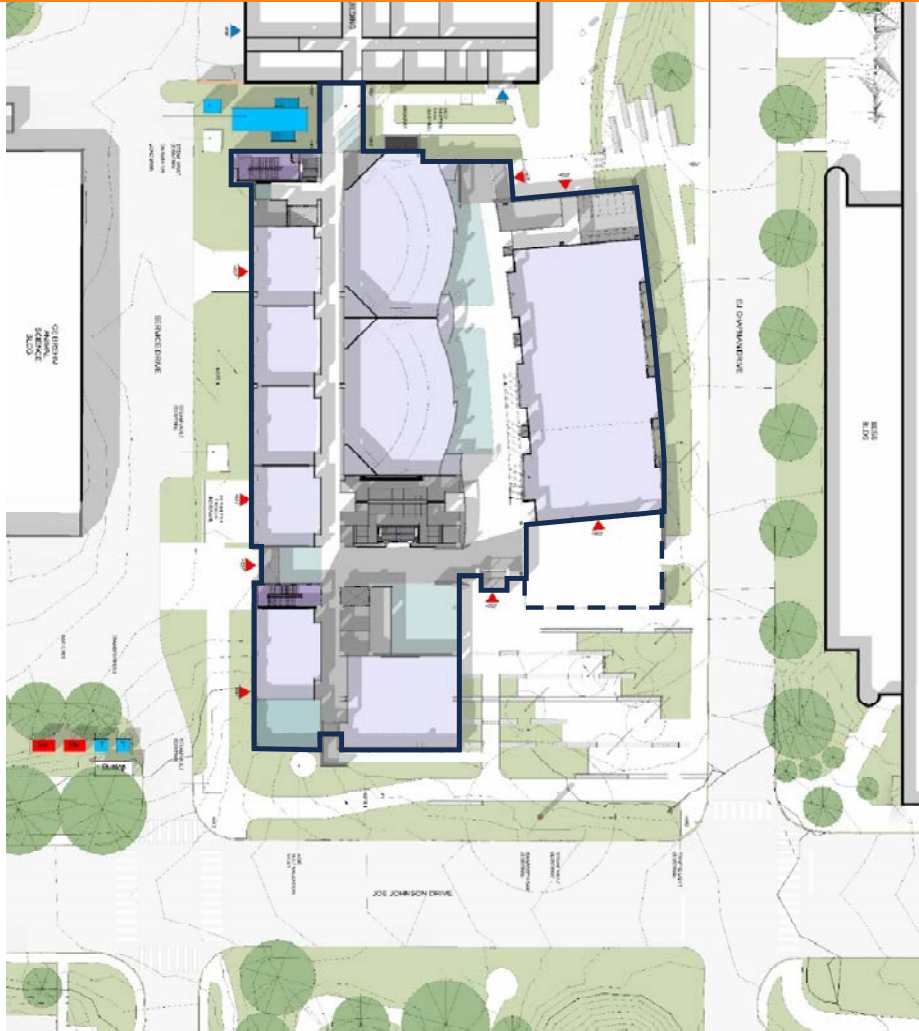


Site Diagram





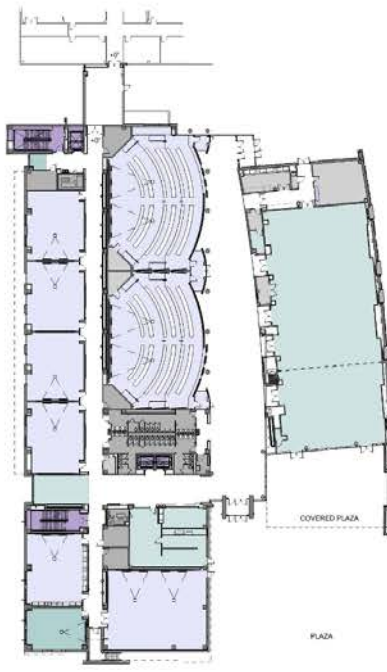
Site Plan



Floor Plans by Space Type



GROUND FLOOR



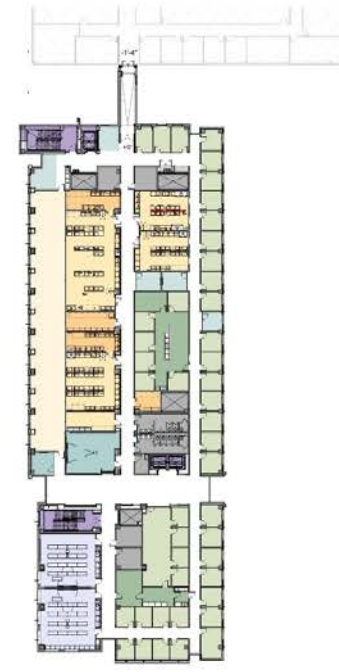
FIRST FLOOR



SECOND FLOOR



THIRD FLOOR



FOURTH FLOOR

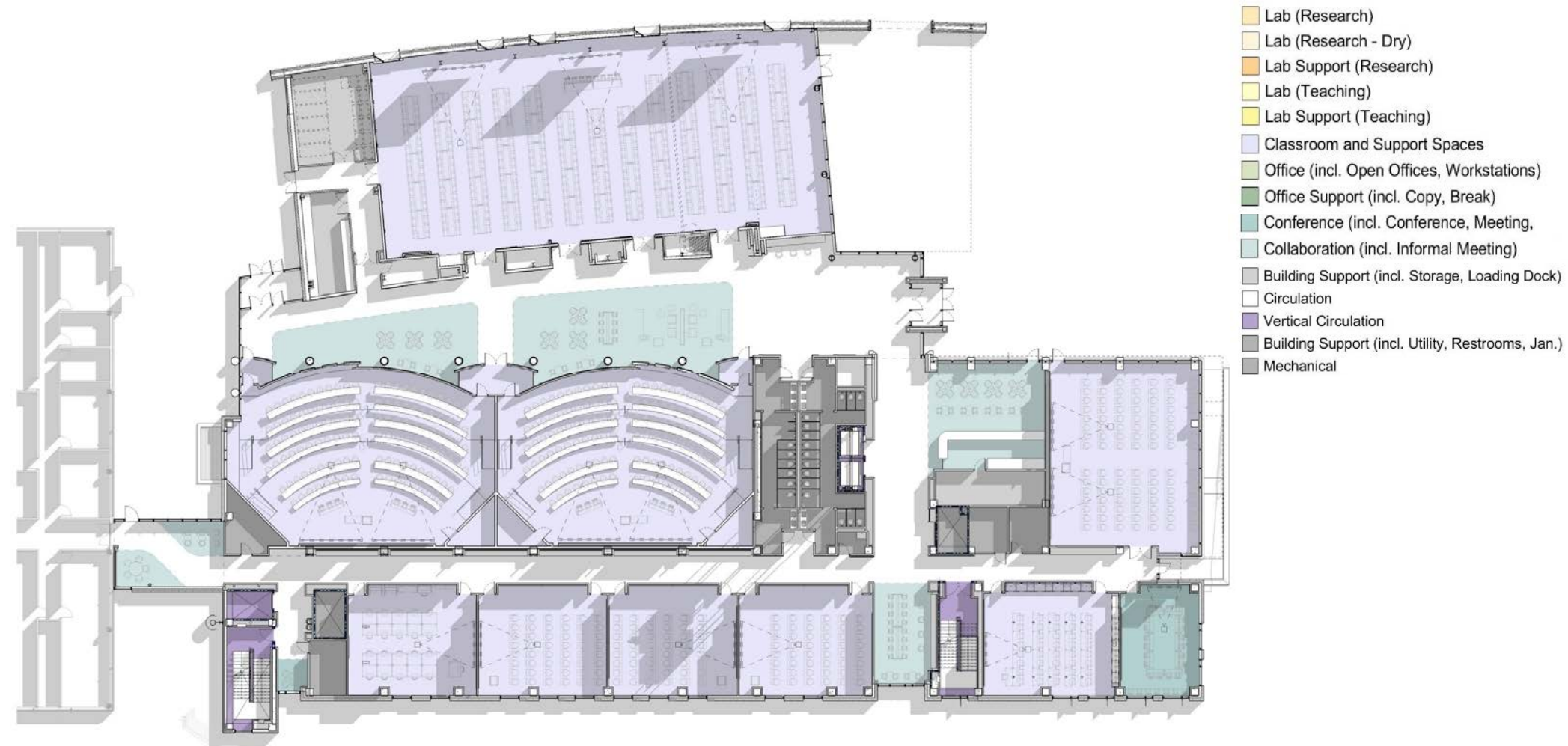
- Lab (Research)
- Lab (Research - Dry)
- Lab Support (Research)
- Lab (Teaching)
- Lab Support (Teaching)

- Classroom and Support Spaces
- Office (incl. Open Offices, Workstations)
- Office Support (incl. Copy, Break)
- Conference (incl. Conference, Meeting, Auditorium)
- Collaboration (incl. Informal Meeting)

- Building Support (incl. Storage, Loading Dock)
- Circulation
- Vertical Circulation
- Building Support (incl. Utility, Restrooms, Jan.)
- Mechanical
- Existing PBB



First Floor Plan



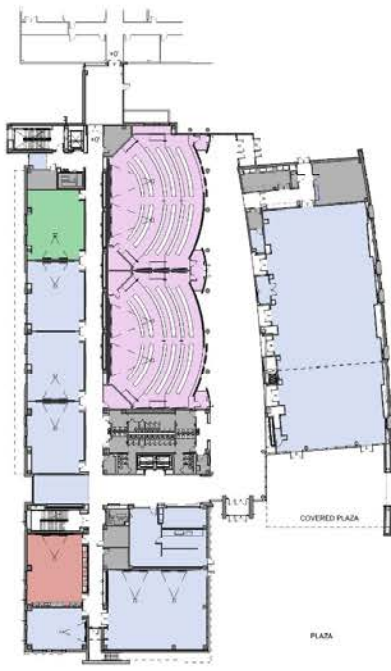
Typical Upper Floor Plan



Floor Plans by Department



GROUND FLOOR



FIRST FLOOR



SECOND FLOOR



THIRD FLOOR



FOURTH FLOOR

■ BESS	■ PS	■ SIC	■ CVM
■ EPP	■ SAFETY	■ CIRCULATION	■ HCA
■ FWF	■ SHARED	■ BLDG SPT	



LEGEND - DEPARTMENT

- BESS
- CVM
- EPP
- FWF
- HCA
- PS
- SAFETY
- SHARED
- SIC
- CIRCULATION
- BLDG SPT
- EXISTING PBB





Second Floor Department Plan





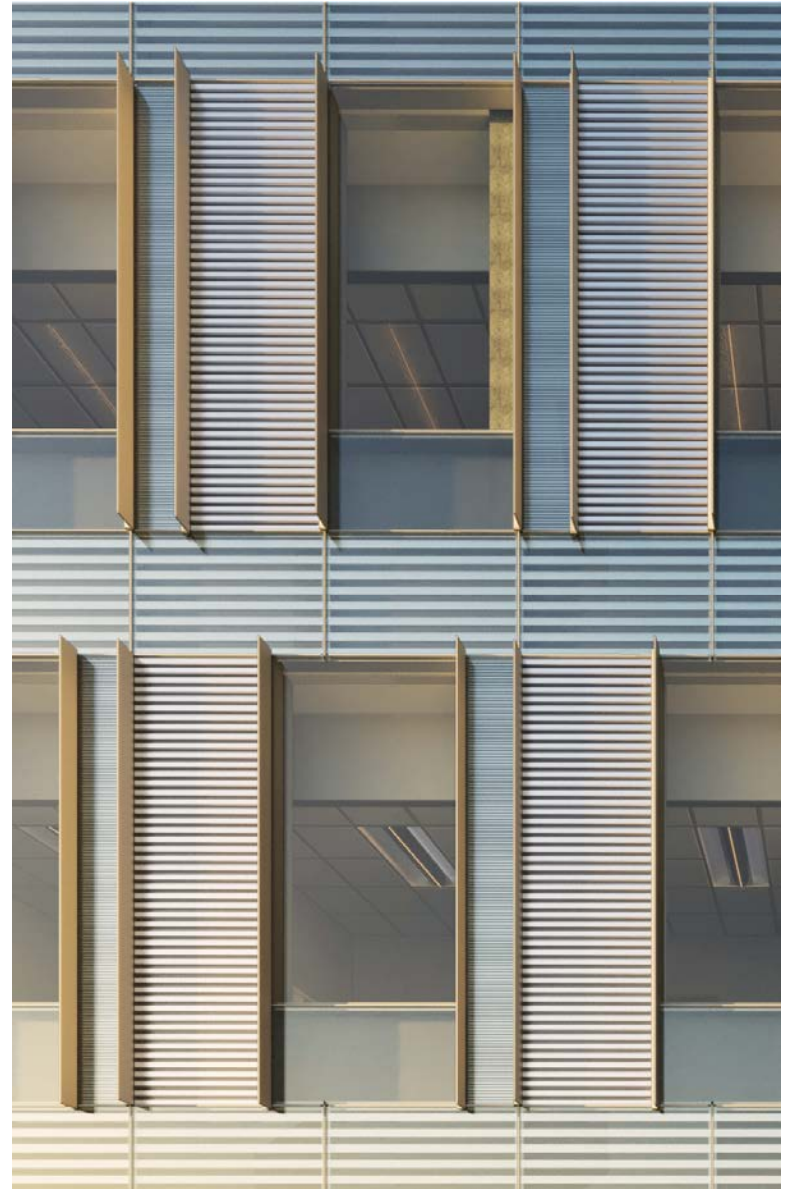
Fourth Floor Department Plan



Exterior Design Renderings

















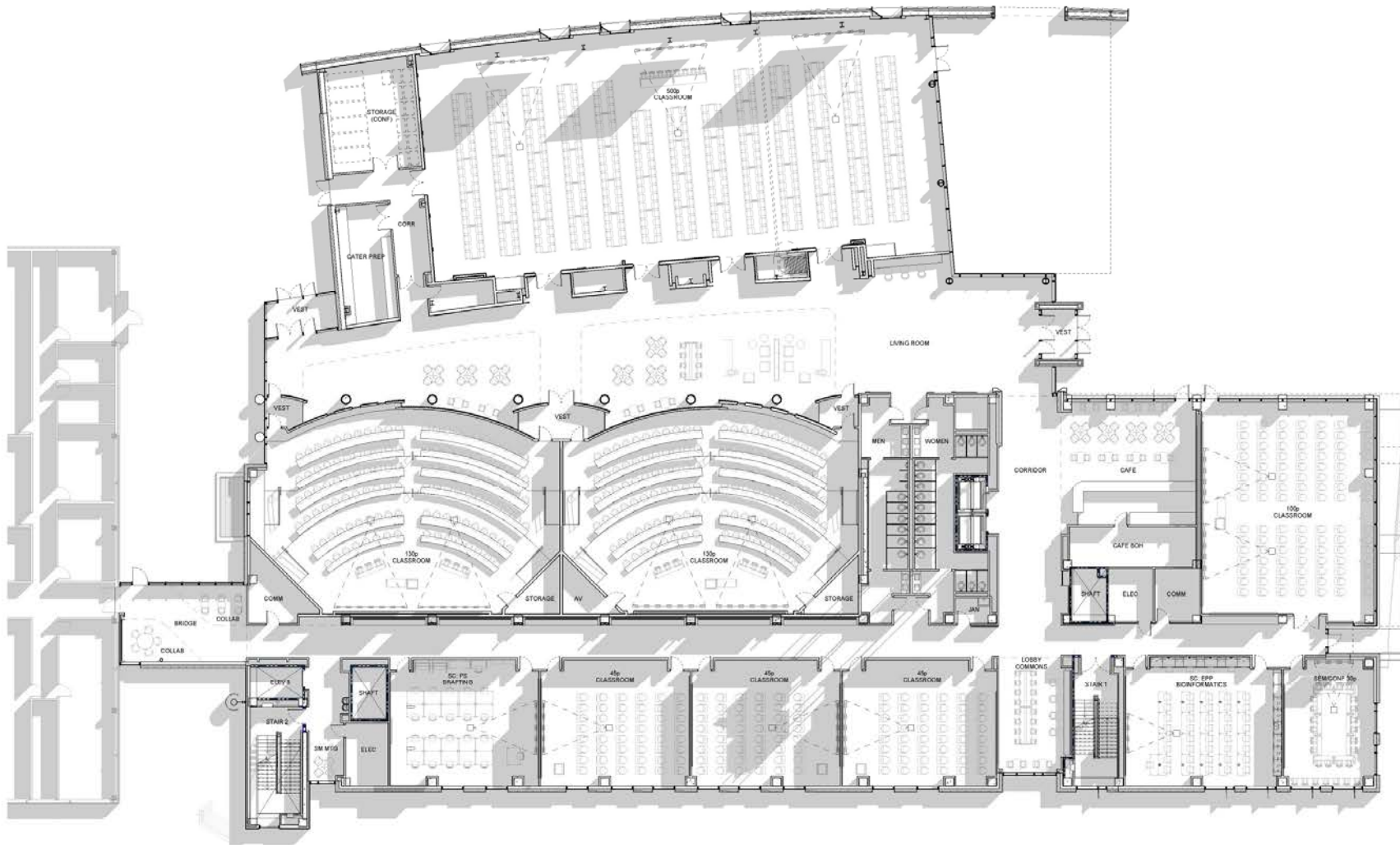
**INNOVATION BY
DESIGN**

a vision of the new ecological horticulture at UTIA's EESRB

Interior Design Renderings



FIRST FLOOR PLAN



500

LIV

CVM

CLA

GAR

STAIR 1

STAIR 2

STAIR 3

STAIR 4

STAIR 5

STAIR 6

STAIR 7

STAIR 8

STAIR 9

STAIR 10

STAIR 11

STAIR 12

STAIR 13

STAIR 14

STAIR 15

STAIR 16

STAIR 17

STAIR 18

STAIR 19

STAIR 20

STAIR 21

STAIR 22

STAIR 23

STAIR 24

STAIR 25

STAIR 26

STAIR 27

STAIR 28

STAIR 29

STAIR 30

STAIR 31

STAIR 32

STAIR 33

STAIR 34

STAIR 35

STAIR 36

STAIR 37

STAIR 38

STAIR 39

STAIR 40

STAIR 41

STAIR 42

STAIR 43

STAIR 44

STAIR 45

STAIR 46

STAIR 47

STAIR 48

STAIR 49

STAIR 50

STAIR 51

STAIR 52

STAIR 53

STAIR 54

STAIR 55

STAIR 56

STAIR 57

STAIR 58

STAIR 59

STAIR 60

STAIR 61

STAIR 62

STAIR 63

STAIR 64

STAIR 65

STAIR 66

STAIR 67

STAIR 68

STAIR 69

STAIR 70

STAIR 71

STAIR 72

STAIR 73

STAIR 74

STAIR 75

STAIR 76

STAIR 77

STAIR 78

STAIR 79

STAIR 80

STAIR 81

STAIR 82

STAIR 83

STAIR 84

STAIR 85

STAIR 86

STAIR 87

STAIR 88

STAIR 89

STAIR 90

STAIR 91

STAIR 92

STAIR 93

STAIR 94

STAIR 95

STAIR 96

STAIR 97

STAIR 98

STAIR 99

STAIR 100

STAIR 101

STAIR 102

STAIR 103

STAIR 104

STAIR 105

STAIR 106

STAIR 107

STAIR 108

STAIR 109

STAIR 110

STAIR 111

STAIR 112

STAIR 113

STAIR 114

STAIR 115

STAIR 116

STAIR 117

STAIR 118

STAIR 119

STAIR 120

STAIR 121

STAIR 122

STAIR 123

STAIR 124

STAIR 125

STAIR 126

STAIR 127

STAIR 128

STAIR 129

STAIR 130

STAIR 131

STAIR 132

STAIR 133

STAIR 134

STAIR 135

STAIR 136

STAIR 137

STAIR 138

STAIR 139

STAIR 140

STAIR 141

STAIR 142

STAIR 143

STAIR 144

STAIR 145

STAIR 146

STAIR 147

STAIR 148

STAIR 149

STAIR 150

STAIR 151

STAIR 152

STAIR 153

STAIR 154

STAIR 155

STAIR 156

STAIR 157

STAIR 158

STAIR 159

STAIR 160

STAIR 161

STAIR 162

STAIR 163

STAIR 164

STAIR 165

STAIR 166

STAIR 167

STAIR 168

STAIR 169

STAIR 170

STAIR 171

STAIR 172

STAIR 173

STAIR 174

STAIR 175

STAIR 176

STAIR 177

STAIR 178

STAIR 179

STAIR 180

STAIR 181

STAIR 182

STAIR 183

STAIR 184

STAIR 185

STAIR 186

STAIR 187

STAIR 188

STAIR 189

STAIR 190

STAIR 191

STAIR 192

STAIR 193

STAIR 194

STAIR 195

STAIR 196

STAIR 197

STAIR 198

STAIR 199

STAIR 200

STAIR 201

STAIR 202

STAIR 203

STAIR 204

STAIR 205

STAIR 206

STAIR 207

STAIR 208

STAIR 209

STAIR 210

STAIR 211

STAIR 212

STAIR 213

STAIR 214

STAIR 215

STAIR 216

STAIR 217

STAIR 218

STAIR 219

STAIR 220

STAIR 221

STAIR 222

STAIR 223

STAIR 224

STAIR 225

STAIR 226

STAIR 227

STAIR 228

STAIR 229

STAIR 230

STAIR 231

STAIR 232

STAIR 233

STAIR 234

STAIR 235

STAIR 236

STAIR 237

STAIR 238

STAIR 239

STAIR 240

STAIR 241

STAIR 242

STAIR 243

STAIR 244

STAIR 245

STAIR 246

STAIR 247

STAIR 248

STAIR 249

STAIR 250

STAIR 251

STAIR 252

STAIR 253

STAIR 254

STAIR 255

STAIR 256

STAIR 257

STAIR 258

STAIR 259

STAIR 260

STAIR 261

STAIR 262

STAIR 263

STAIR 264

STAIR 265

STAIR 266

STAIR 267

STAIR 268

STAIR 269

STAIR 270

STAIR 271

STAIR 272

STAIR 273

STAIR 274

STAIR 275

STAIR 276

STAIR 277

STAIR 278

STAIR 279

STAIR 280

STAIR 281

STAIR 282

STAIR 283

STAIR 284

STAIR 285

STAIR 286

STAIR 287

STAIR 288

STAIR 289

STAIR 290

STAIR 291

STAIR 292

STAIR 293

STAIR 294

STAIR 295

STAIR 296

STAIR 297

STAIR 298

STAIR 299

STAIR 300

STAIR 301

STAIR 302

STAIR 303

STAIR 304

STAIR 305

STAIR 306

STAIR 307

STAIR 308

STAIR 309

STAIR 310

STAIR 311

STAIR 312

STAIR 313

STAIR 314

STAIR 315

STAIR 316

STAIR 317

STAIR 318

STAIR 319

STAIR 320

STAIR 321

STAIR 322

STAIR 323

STAIR 324

STAIR 325

STAIR 326

STAIR 327

STAIR 328

STAIR 329

STAIR 330

STAIR 331

STAIR 332

STAIR 333

STAIR 334

STAIR 335

STAIR 336

STAIR 337

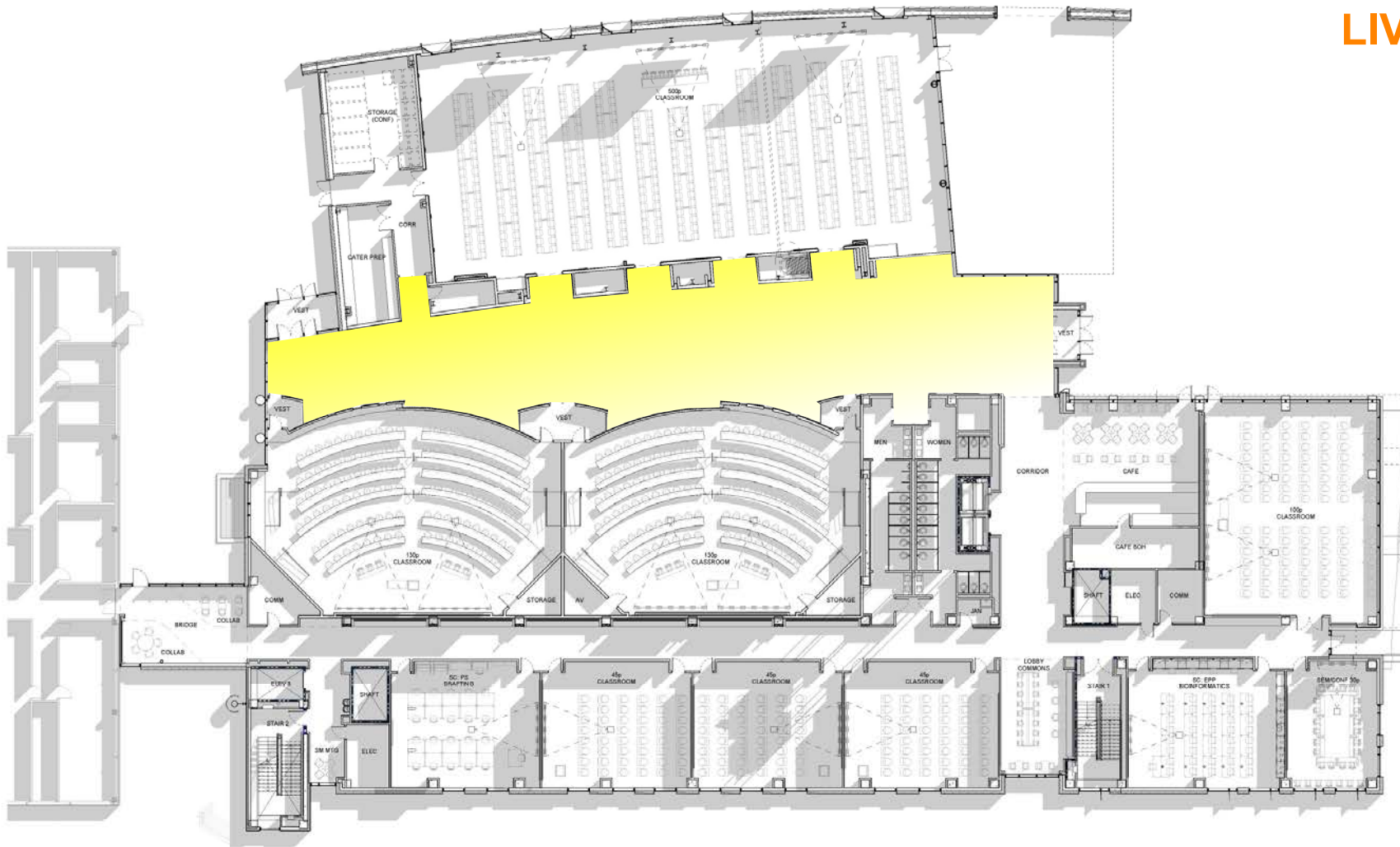
STAIR 338

STAIR 33

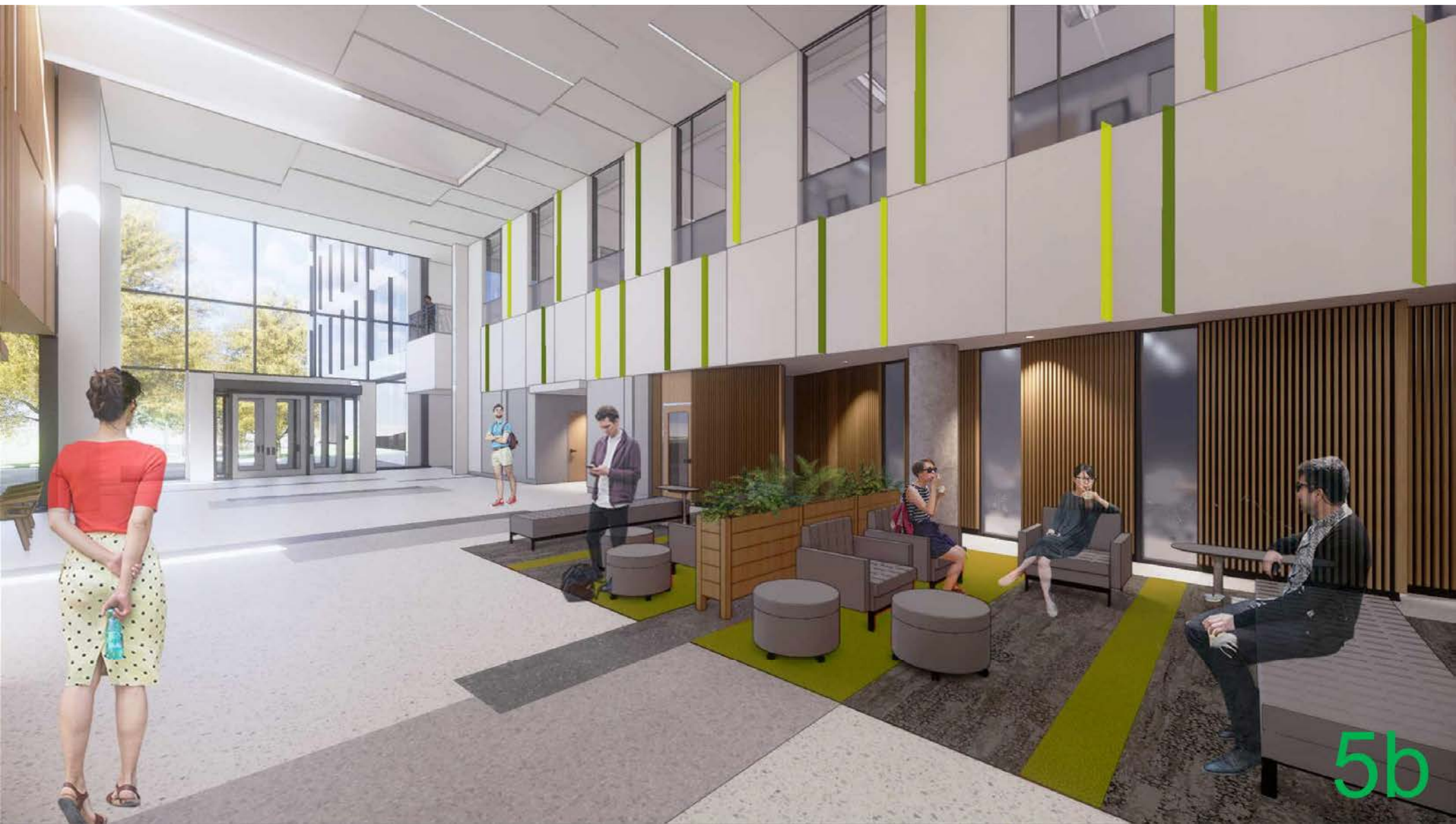
—| GAP

FIRST FLOOR PLAN

LIVING ROOM







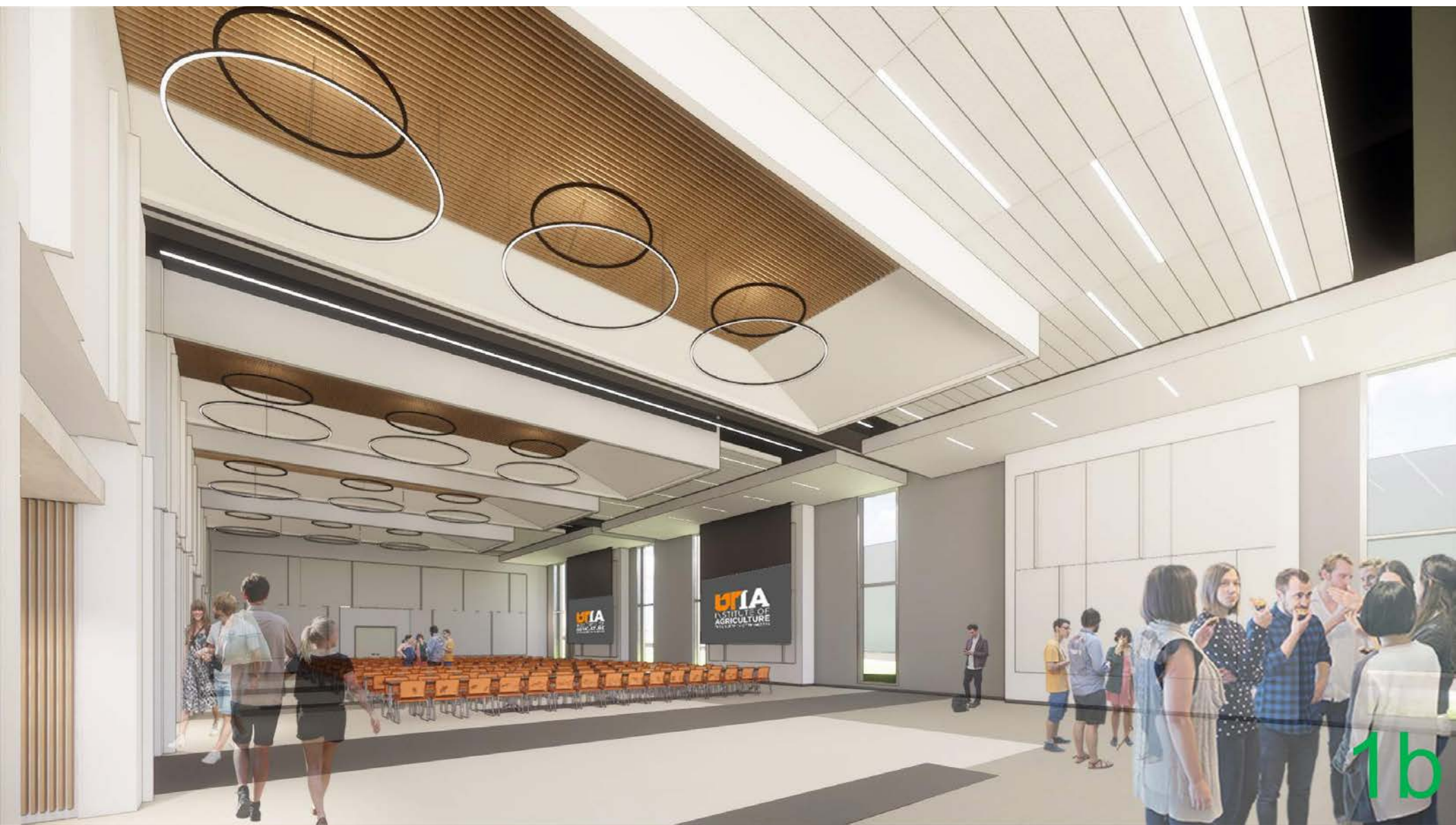
5b







500P AU



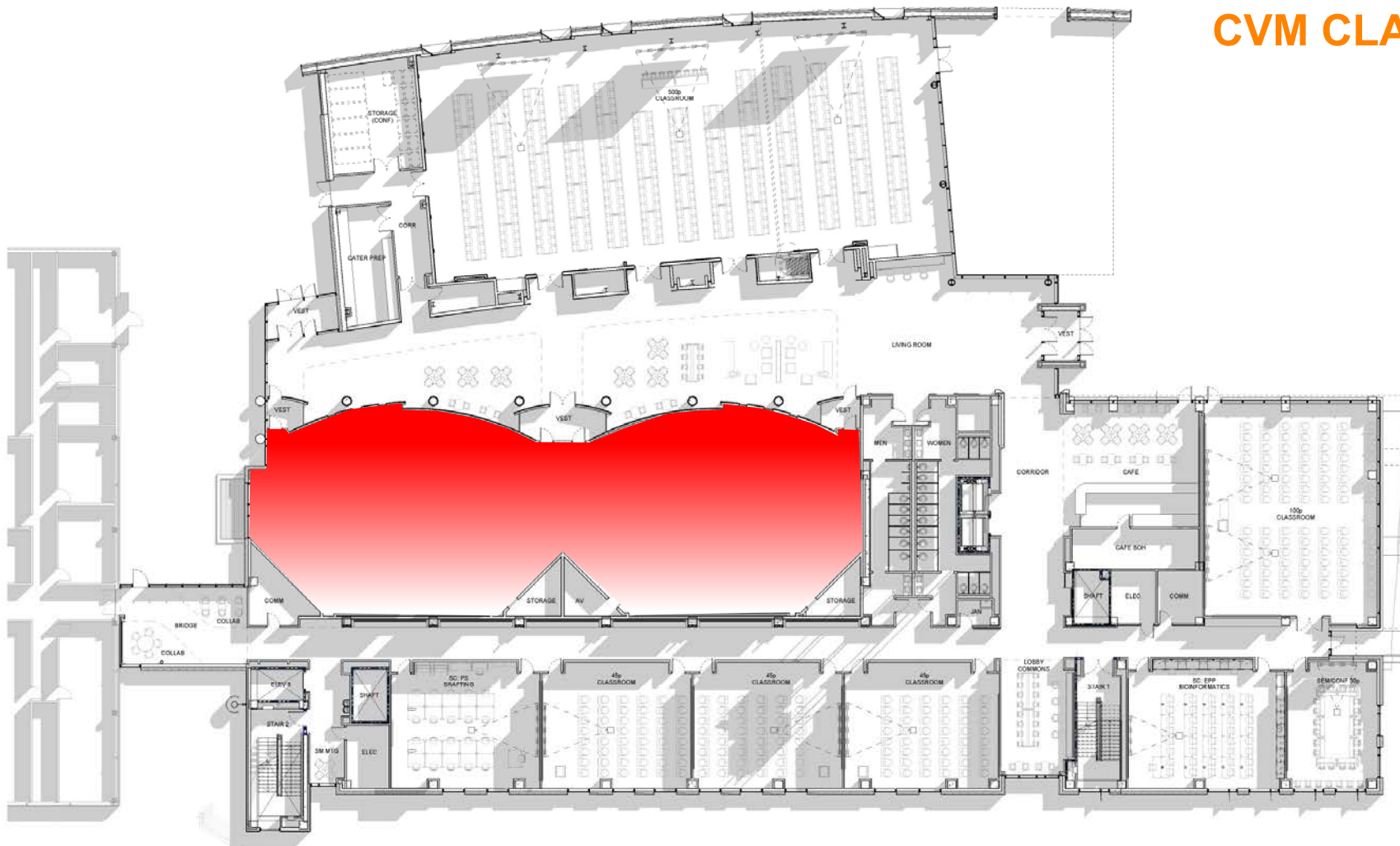
1b



2b

FIRST FLOOR PLAN

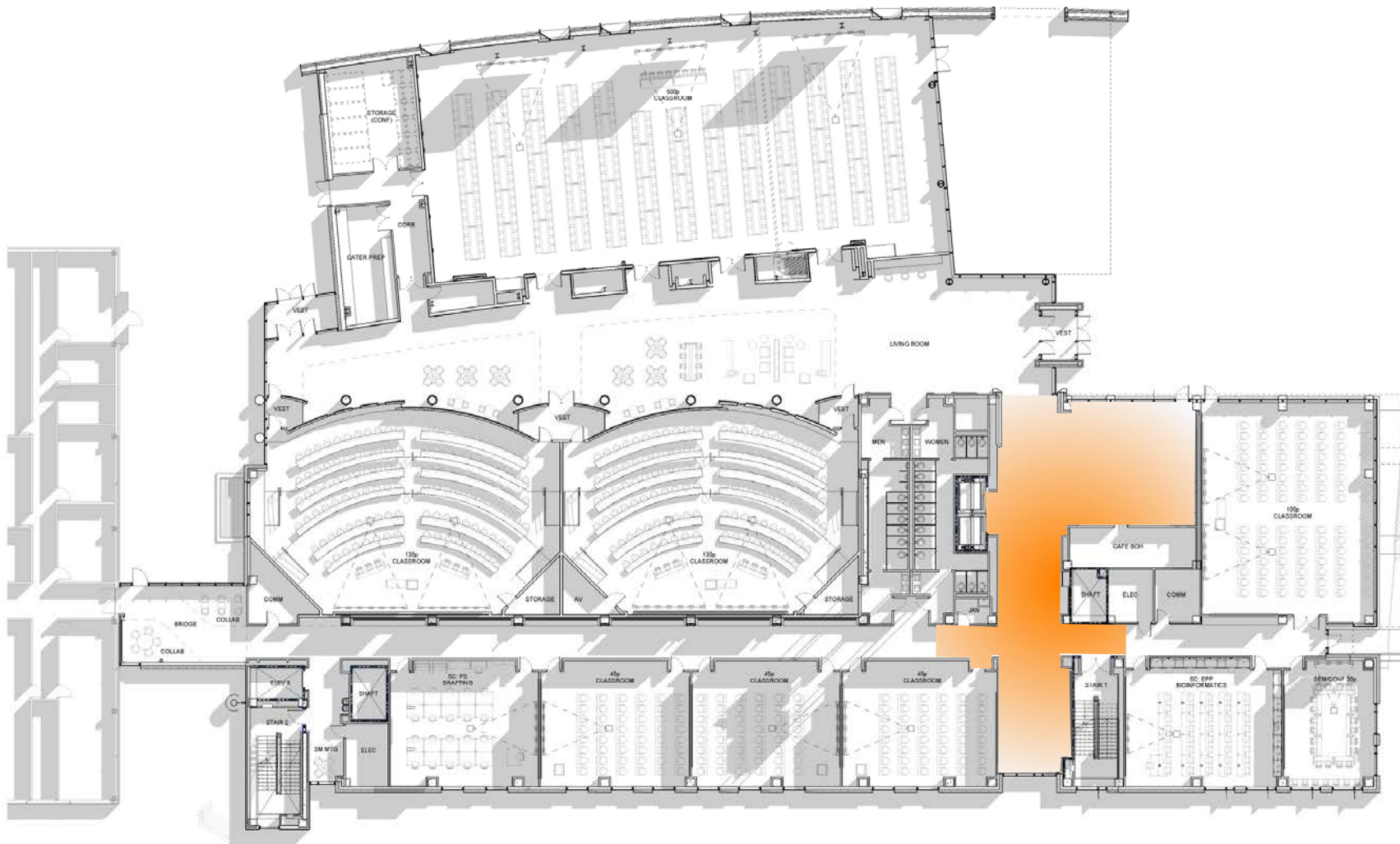
CVM CLASSROOMS

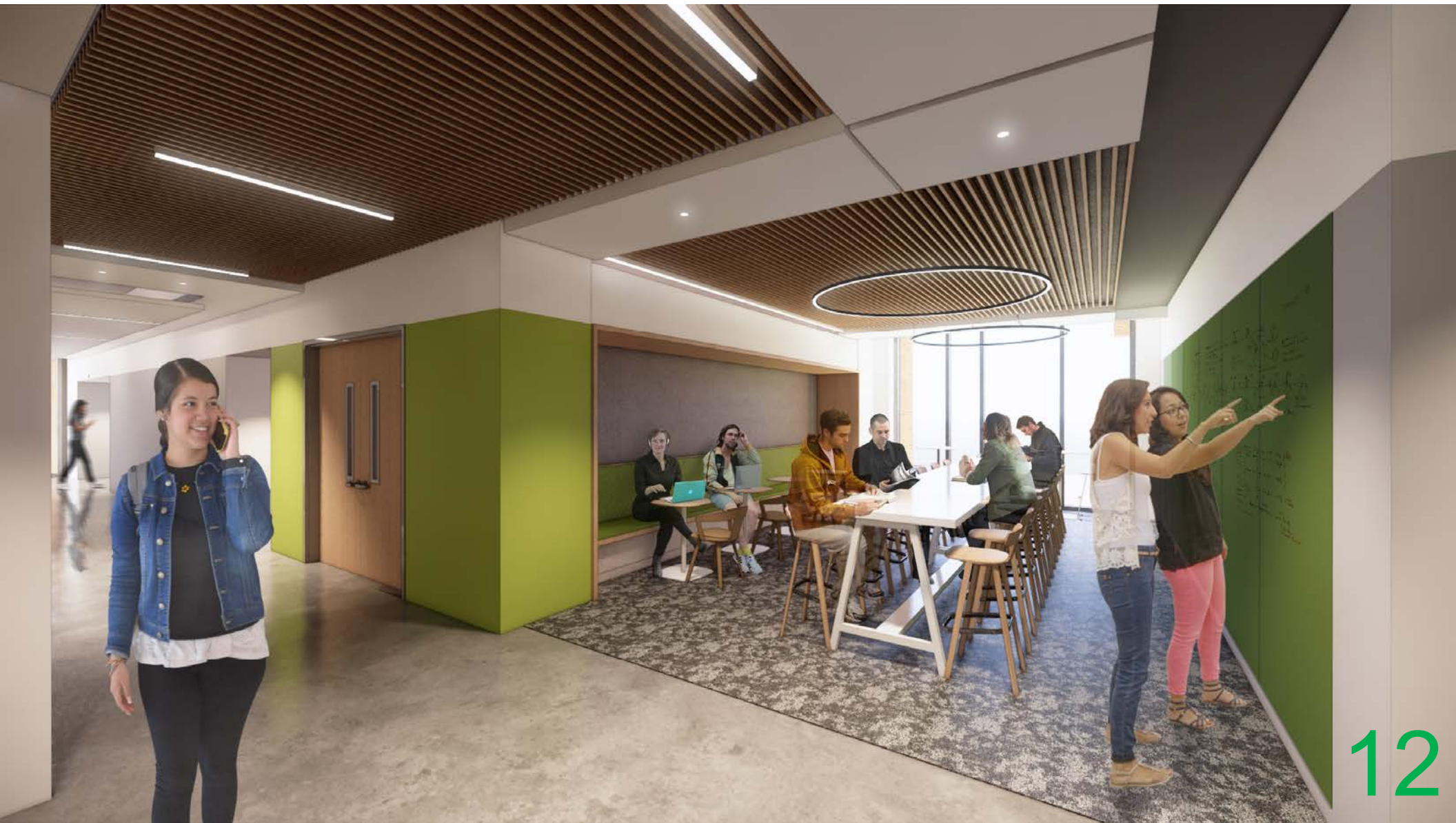




FIRST FLOOR PLAN

GAP



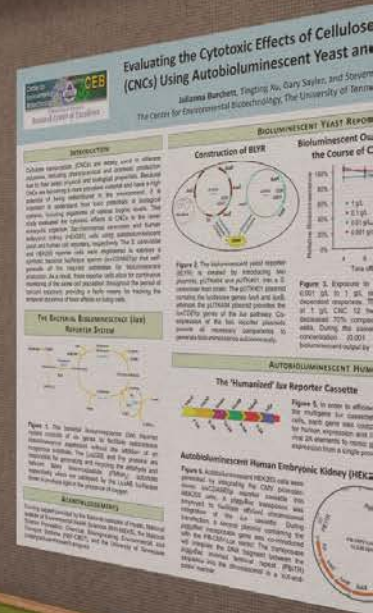




PLEASE!

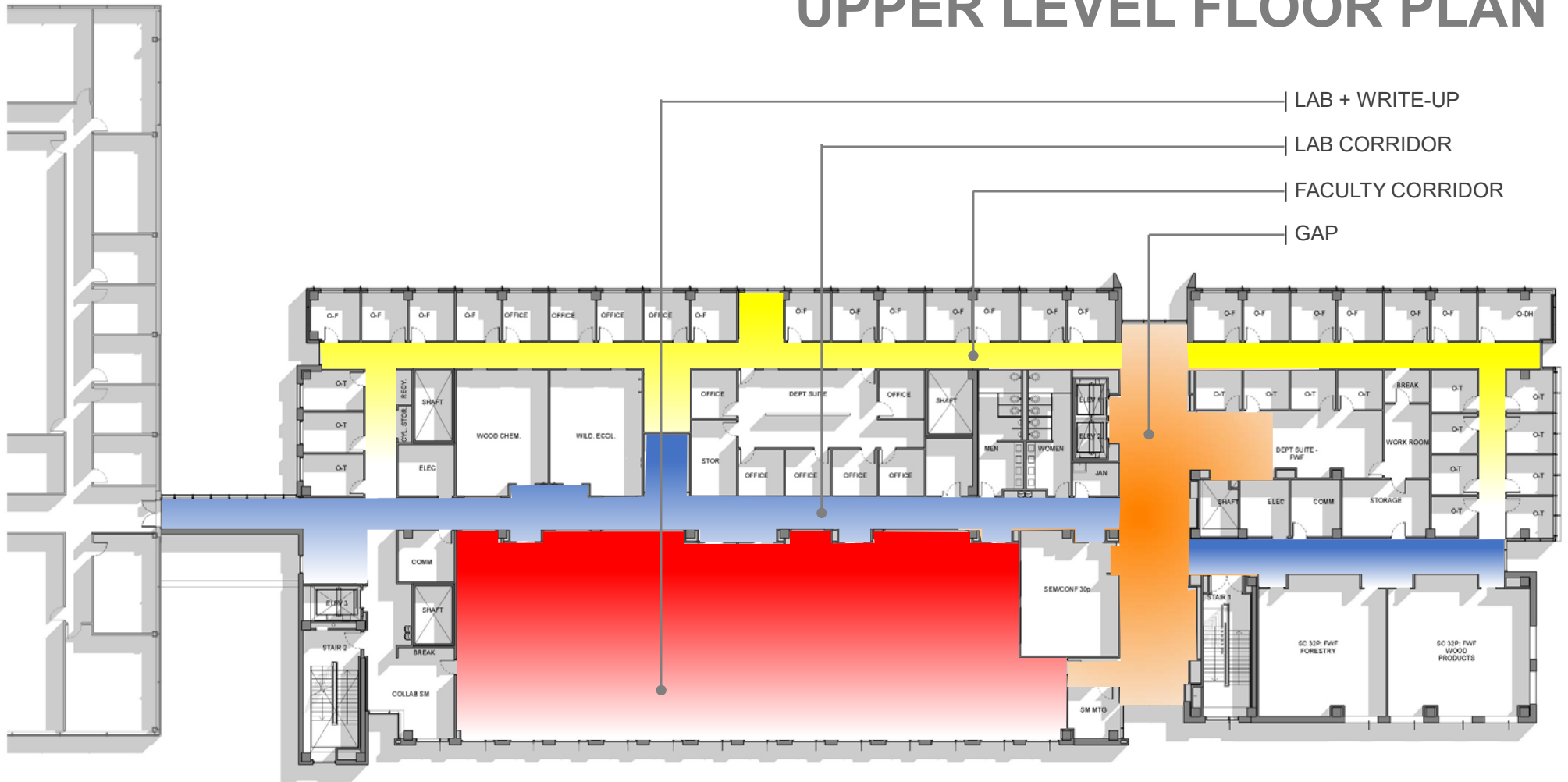


Only you can prevent forest fires



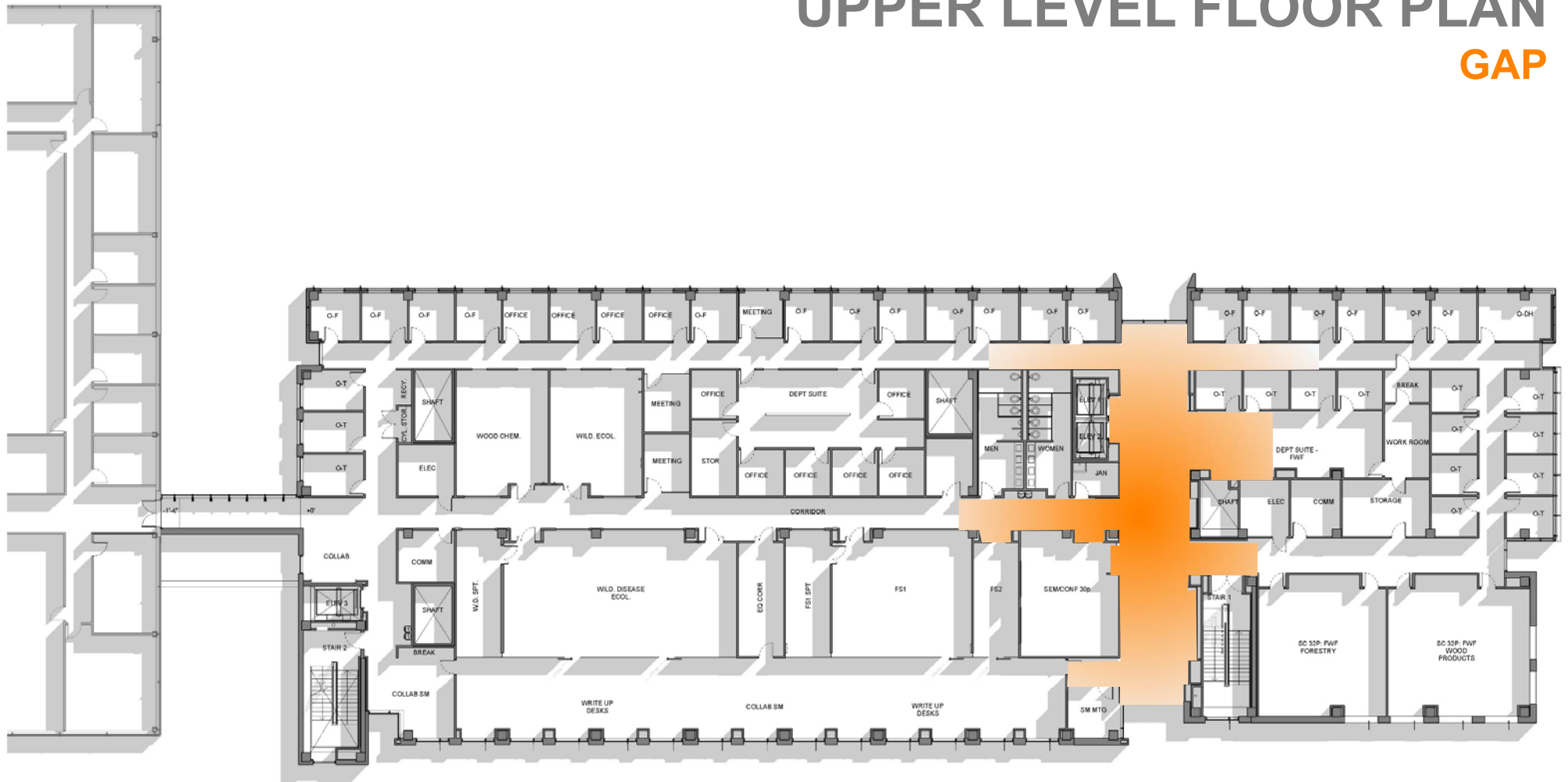
UPPER LEVEL FLOOR PLAN

UPPER LEVEL FLOOR PLAN



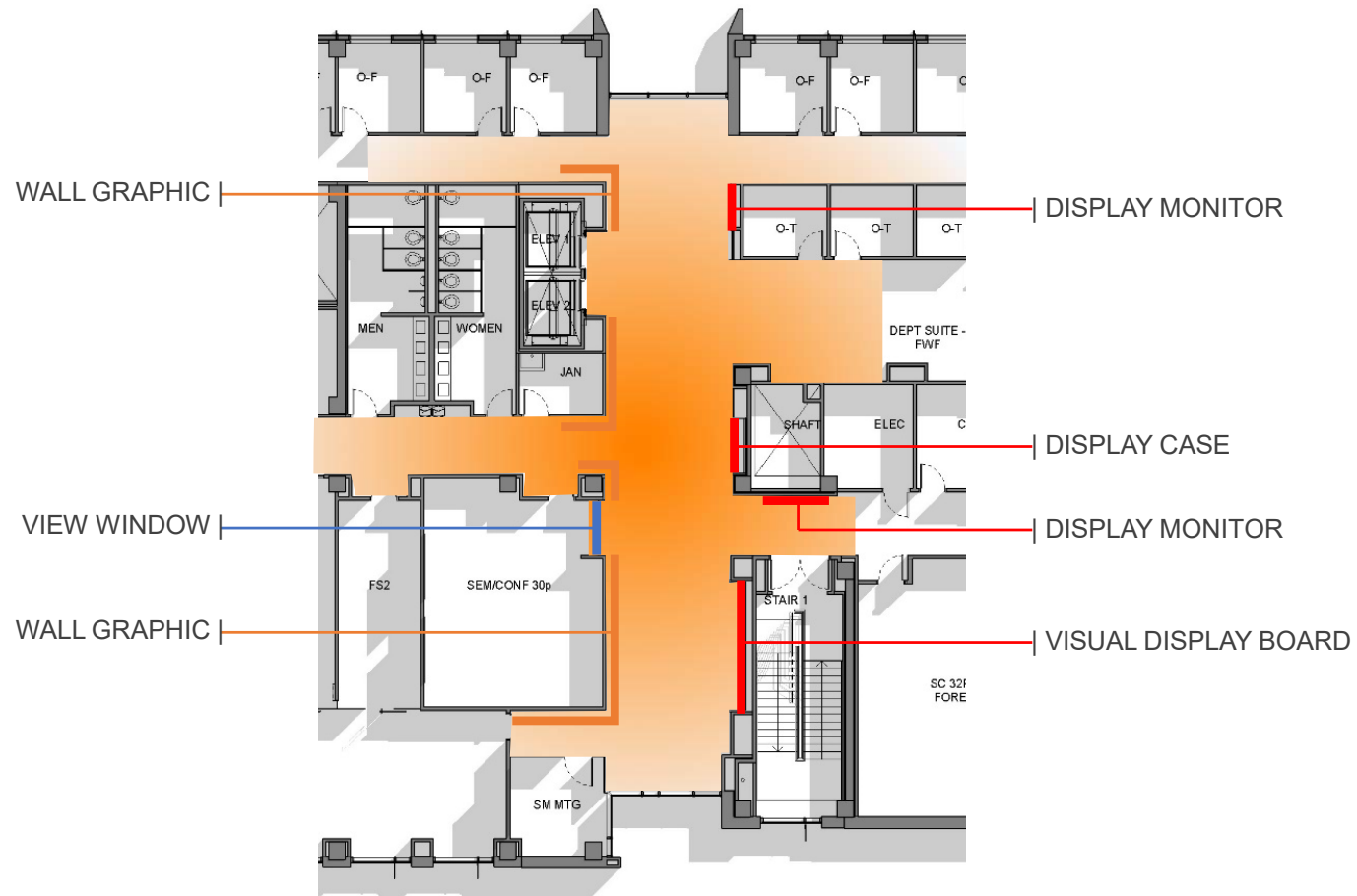
UPPER LEVEL FLOOR PLAN

GAP



UPPER LEVEL FLOOR PLAN

GAP – WALL DISPLAY



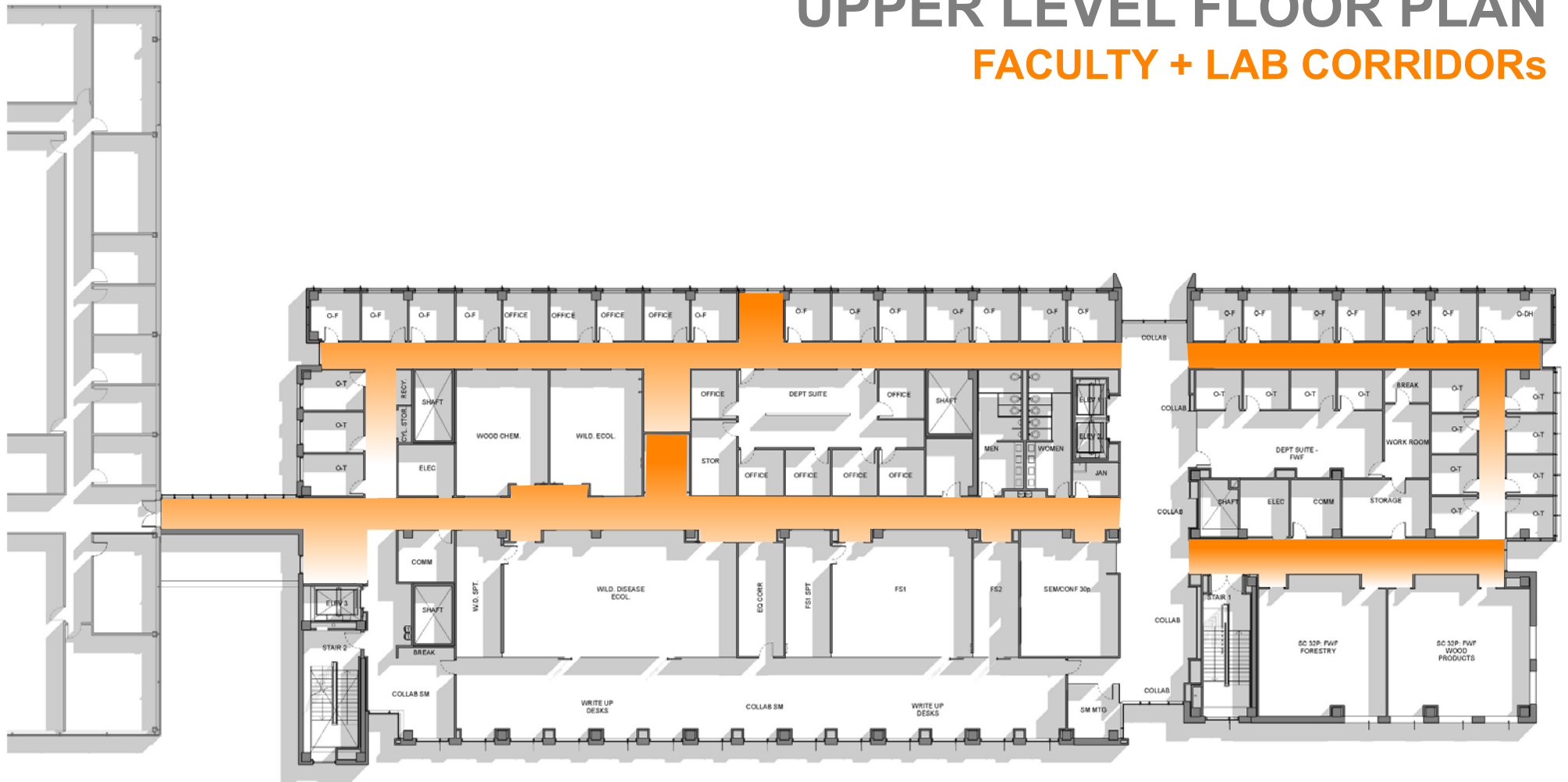






UPPER LEVEL FLOOR PLAN

FACULTY + LAB CORRIDORs



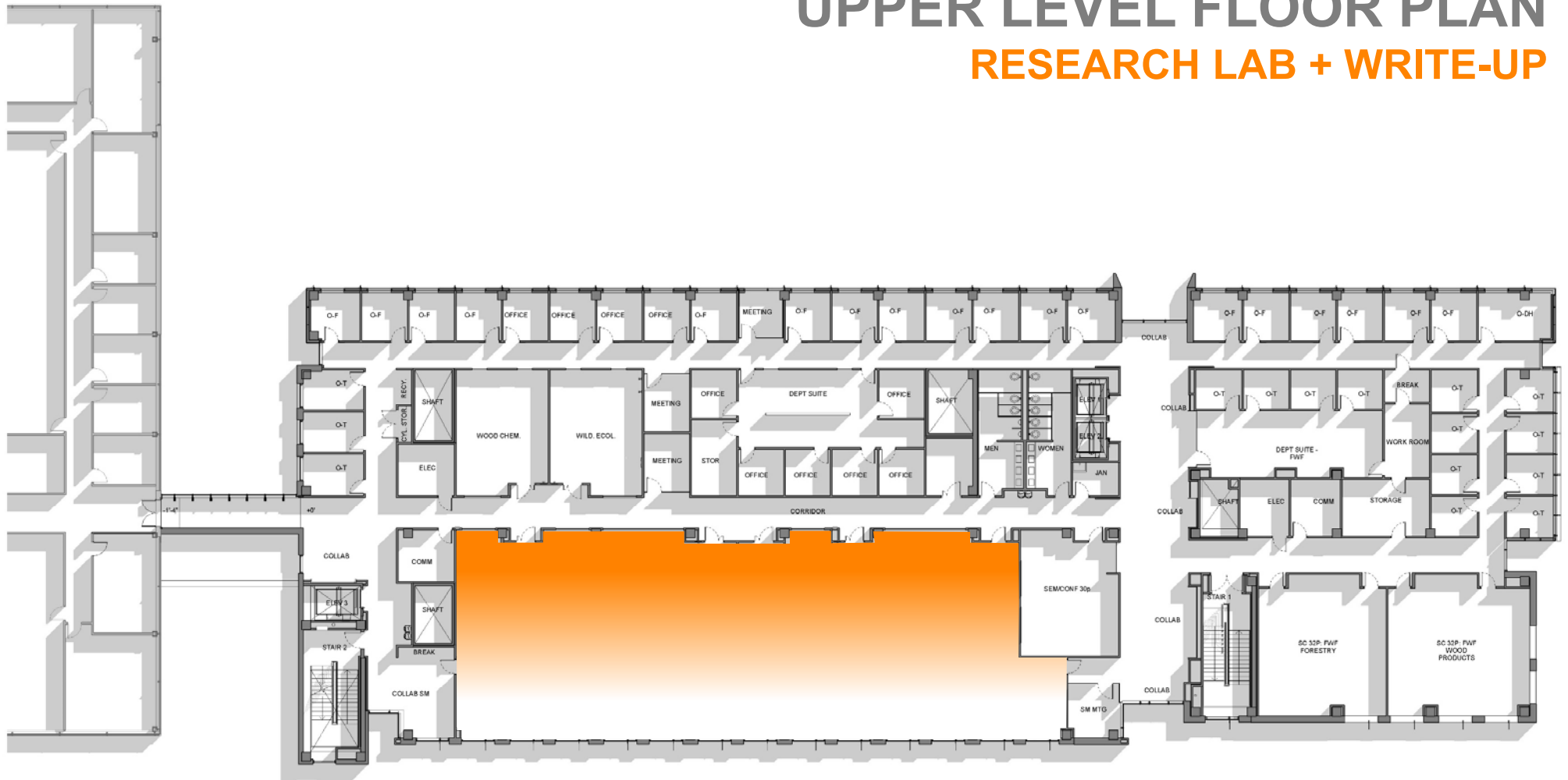






UPPER LEVEL FLOOR PLAN

RESEARCH LAB + WRITE-UP









Construction Photos



Construction Photos



Construction Photos



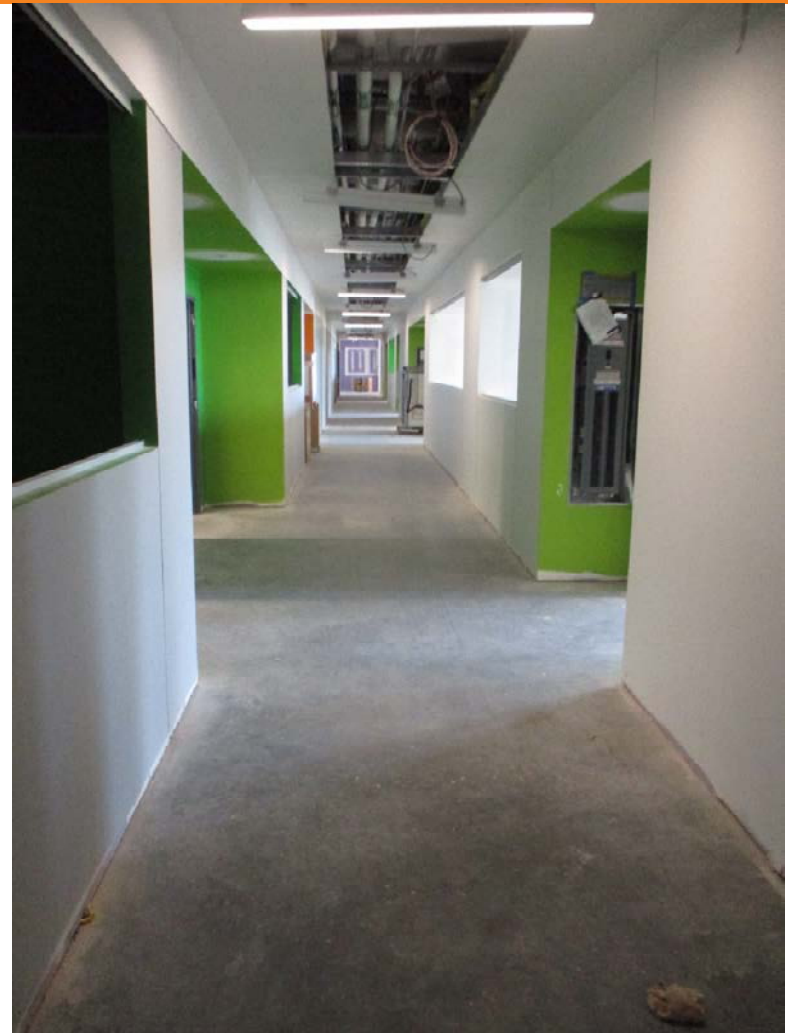
Construction Photos



Construction Photos



Construction Photos



Construction Photos



Construction Photos



User Site Tours

Upcoming User Group Tours

- Friday, October 27th @ 2:30pm
- Monday, October 30th @ 3:00pm

Meeting location at the project trailer

Proper PPE is required.

- Vest and hardhats will be provided
- No shorts, skirts or open-toed shoes

Thank you!

Discussion

